



TWO DAY AUCTION: APRIL 7th & 8th, 2006

Friday, April 7 AT 12:00 Noon & Saturday, April 8 at 10:00 A.M.

Located: East of Kokomo, IN. on St. Rd. 22 & 35 - 3 3/4 miles to Kokomo Shrine Club

Gus VanDePerre Collection

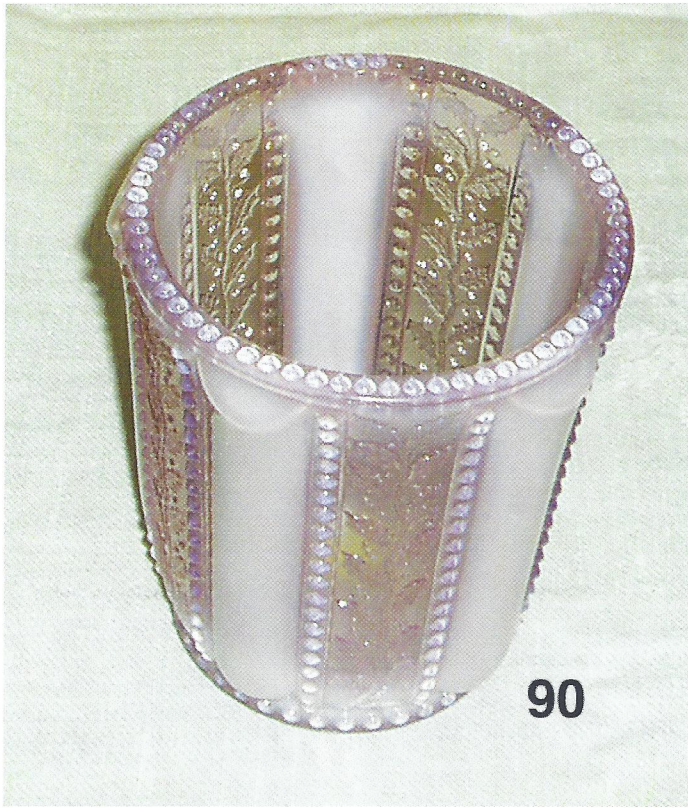
OTTO'S AUCTION SERVICE

www.ottoauctions.com

DAN OTTO
765-395-6274
765-437-8694
AUO#1052757

MATT OTTO
765-395-7553
AUO#10200145

RINGMAN
JIM TETER
765-628-7044



Terms and Conditions of Sale

THIS IS A VERY NICE AUCTION, ONCE IN A LIFETIME CHANCE TO BUY MANY OF THESE ITEMS, DON'T MISS THIS ONE (ONE MAN'S COLLECTION)

Doors will be open for inspection on glassware at 9:00 a.m. Friday. Doors will be opened from 6:00 to 8:00 p.m. Friday evening for inspection on glass being sold on Saturday.

TERMS: Cash, MasterCard/VISA, good Indiana Check w/positive Driver's License ID. No out of state checks unless known by this auction firm or be accompanied by current letter of bank credit. 3% buyer's premium 3% discount for cash or check. 10% charge for absentee bids. Not responsible for accidents or items after sold. Statements made day of sale take precedence over any printed matter.

Available Lodging in Kokomo, Indiana:

Clarion - 765-459-8001
 Comfort Inn - 765-452-5050
 Courtyard by Marriott - 765-453-0800
 Days Inn - 765-453-7100
 Fairfield Inn - 453-8822
 Hampton Inn - 765-455-2900
 Holiday Inn Express - 765-453-2222
 Best Western - Signature Inn - 765-455-1000

NOT ALL ITEMS ARE PICTURED

*(unauthorized use of this brochure is prohibited)
 ©Copyright 2006*



1. Clear Frosted Buffalo Paperweight
2. Choc. Leaf Bracket water pitcher (insc. PanAm. 1901)
3. Red Agate Tall Cat on hamper
4. Choc. Orange Tree powder box, bottom chip
5. Choc. Low Cat on hamper, some repair
6. Nile Green Dewey Parfait, no lid
7. Choc. Uneeda Milk Biscuit tumbler
8. Choc. Puff Box
9. Choc. Pepper Box Mug
10. Choc. Venetian Tray 8x10, sm. Chip
11. Red Agate Cactus salt & pepper
12. Red Agate Cactus toothpick
13. Choc. Cuff Box
14. Choc. Cactus Mustard w/metal lid & spoon
15. Choc. Herringbone Buttress mug
16. Choc. Russell Flower Pot, bottom polish, no tray
17. Nile Green Dust Pan, tiny chip
18. Choc. Plain Ware Compote
19. Choc. File Spooner
20. Choc. White Oak cover butter, only one known
21. Choc. Rect. Cover box
22. Choc. No. 102 salt & pepper w/stand
23. Choc. Scalloped Flange vase
24. Choc. Cactus celery, chigger on foot
25. Nile Green Teardrop & Tassel water pitcher, repaired
26. Nile Green Teardrop & Tassel tumbler
27. Red Agate Vintage bowl, chip
28. Choc. Melrose open compote
29. Choc. Honeycomb master salt
30. Choc. Honeycomb individual salt
31. Choc. Cut-glass pattern bowl, chip
32. Choc. 6 1/4 dia. Comport, chip
33. Choc. Serenade water pitcher w/pouring spout
34. Choc. Serenade sm. Mug, heat stress on handle
35. Choc. Serenade sm. Mug
36. Choc. Serenade sm. Mug
37. Choc. Serenade sm. Mug



78. Red Agate Leaf Bracket cover butter
79. Choc. Geneva syrup
80. Choc. Honeycomb Rect. Dish 4" W- 6 3/4 L
81. Choc. Geneva salt & pepper
82. Choc. Big Rib salt
83. Choc. Leaf Bracket cruet
84. Choc. Shuttle cover butter
85. Choc. Six Fluted bowl
86. Choc. Six Fluted sauce
87. Choc. Teardrop & Tassel lg. sauce
88. Choc. Teardrop & Tassel sm. Sauce
89. Choc. Cut-glass type bowl
90. Rose Agate Holly spooner
91. Choc. Heron water pitcher
92. Choc. Squirrel water pitcher
93. Choc. Racing Deer and Doe water pitcher
94. Choc. Teardrop & Tassel cover butter
95. Choc. Teardrop & Tassel cover sugar
96. Choc. Teardrop & Tassel Creamer
97. Choc. Collar box 3 1/2 H
98. Choc. Geneva jelly compote
99. Choc. Geneva Oval bowl 10" long
100. Choc. Dewey Cruet
101. Choc. Dewey salt & pepper, Flake on feet
102. Choc. Dewey sm. Serpentine tray
103. Choc. Indoor drinking scene mug 5 5/8, Flake on rim
104. Choc. Venetian jewel box, chigger on bottom
105. Choc. Venetian Tray 3 7/8"x5"
106. Choc. Venetian Tray 4 3/8"x8 3/8"
107. Choc. Leaf Bracket relish 11"
108. Choc. W.R.B.K. water pitcher
109. Choc. W.R.B.K. tumbler
110. Choc. Orange Tree hatpin holder
111. Choc. Cattail and Waterlilly water pitcher, stress mark
112. Choc. Cattail and waterlilly tumbler
113. Canary smooth sided wheelbarrow
114. Amber smooth sided wheelbarrow
115. Choc. Aurora rectangular box 5 1/2"x9", chips
116. Choc. Masonic nappy
117. Choc. Navarre nappy, chips

38. Nile Green Dog head toothpick, sm. Flake
39. Choc. Childs Austrian cover Butter
40. Choc. Childs Austrian cover Sugar
41. Choc. Childs Austrian Spooner
42. Choc. Childs Austrain Creamer
43. Choc. Cactus cover Cracker Jar
44. Choc. Leaf Bracket salt & pepper
45. Choc. Fleur-de-lis celery
46. Choc. Fleur-de-lis nappy
47. Choc. Beaded Triangle nappy
48. Choc. Melrose lg. cover compote, lid chip
49. Choc. Daisy cover butter
50. Choc. Large Dewey cover butter
51. Choc. Large Dewey cover sugar, repaired
52. Choc. Large Dewey Creamer
53. Choc. Large Dewey Spooner, flake on foot
54. Choc. Smooth rim Dolphin
55. Choc. Fashion (Venetian) glove box, hairline in bottom
56. Nile Green Dewey cruet w/stopper, (After Fire Stopper)
57. Choc. W.R.B.K. master berry bowl
58. Choc. W.R.B.K. (6) sauces
59. Choc. #75 Ice Tea
60. Choc. W.R.B.K. smoking set-3 pieces
61. Choc. Shuttle salt & pepper
62. Choc. Five-Fluted bowl
63. Choc. Five-Fluted sauce
64. Choc. W.R.B.K. 10 1/8" vase
65. Choc. Fleur-de-lis cover butter
66. Choc. Fleur-de-lis cover sugar
67. Choc. Fleur-de-lis Creamer
68. Choc. Fleur-de-lis Spooner
69. Choc. Cord Drapery Syrup, bubble burst
70. Choc. Fleur-de-lis water pitcher
71. Choc. Fleur-de-lis tumber
72. Choc. Masonic vase
73. Choc. Dewey parfait w/lid
74. Choc. Daisy cover sugar
75. Choc. Daisy Creamer
76. Choc. Daily Spooner
77. Choc. Aldine oval cover bowl



118. Choc. Aurora Pickle dish, repaired
119. Choc. Dewey sm. Butter, chip on bottom
120. Choc. Dewey sm. Cover sugar, chip on bottom
121. Choc. Dewey sm. Creamer
122. Choc. File bowl
123. Choc. File sauce
124. Choc. Cattail and waterlilly cover butter, Flakes on bot.
125. Choc. Cattail and waterlilly cover sugar
126. Choc. Cattail and waterlilly creamer
127. Choc. Cattail and waterlilly spooner, flakes
128. Choc. Cattail and waterlilly sauce
129. Choc. Shield w/Daisy Button cruet, chip
130. Choc. Shield w/Daisy Button lg. bowl, chip
131. Choc. Shield w/Daisy Button sauce
132. Nile Green Beaded Dolphin
133. Choc. Geneva oval bowl 9 3/8"
134. Choc. Geneva oval bowl 8 1/4", tiny chip
135. Choc. Geneva oval sauce
136. Choc. Phenix 5 bowl
137. Clear Phenix 5 tumbler
138. Choc. Cactus plate
139. Choc. (2) Cactus ice creams
140. Choc. Cactus water pitcher
141. Nile Green indoor mug w/spout
142. Choc. Swirl pattern mug
143. Choc. Melrose fluted compote 6 7/8"
144. Red Agate Leaf Bracket nappy
145. Choc. Cactus sweetmeat (Red Agate)
146. Choc. Cactus 8 1/4" compote (Red Agate), flakes
147. Golden & Choc. Cactus cruet, (Some Golden Agate)
148. Choc. Outdoor mug w/spout
149. Clear Cord Drapery master salt
150. Nile Green hen on nest, sm. Repair on base
151. 2 Nile Green elves mugs
152. Nile Green witch head toothpick (repro)
153. Choc. Cuff set sm. flake
154. Choc. File water pitcher, hairline in spout
155. Choc. File tumbler
156. Choc. Beaded triangle Salt & pepper
157. Choc. Majestic compote



158. Choc. Chrysanthemum Leaf Carafe
159. Choc. Wild Rose with Scrolling Childs cover butter
160. Choc. Wild Rose with Scrolling Childs cover sugar
161. Choc. Wild Rose with Scrolling Childs creamer
162. Choc. Wild Rose with Scrolling Childs spooner
163. Choc. Paneled water pitcher, stress on handle
164. Choc. Paneled tumbler, sm. Chip
165. Choc. Indoor Drinking Lg. pitcher w/pouring spout
166. Choc. 6-Indoor Drinking Tumblers
167. Choc. Geneva water pitcher
168. Choc. Geneva tumbler
169. Choc. Jubilee celery tray
170. Choc. Beaded Triangle 6" vase
171. Choc. Indian Head creamer
172. Choc. Geneva Bowl 8 1/2
173. Choc. Geneva sauce
174. Choc. Chrysanthemum Leaf water pitcher
175. Choc. Chrysanthemum Leaf tumbler
176. Red Agate Smooth top dolphin
177. Red Agate Beaded top dolphin
178. Red Agate Sawtooth top dolphin
179. Choc. Rose Garland water pitcher
180. Choc. Rose Garland cover sugar, lid rim chips
181. Choc. Rose Garland creamer, stress line on handle
182. Choc. Griffin Candle holder
183. Choc. Rose Garland footed bowl
184. Choc. Rose Garland footed sauce
185. Choc. Waffle sauce, repaired
186. Choc. 2-Indoor mugs 4 7/8"
187. Choc. Scalloped Flange vase
188. Choc. Cactus 6" vase
189. Choc. Wheelbarrow
190. Translucent Nile Green Wheelbarrow
191. Teal Blue Wheelbarrow
192. Amber Wheelbarrow
193. Nile Green Wheelbarrow
194. Clear Wheelbarrow
195. Choc. Chrysanthemum Leaf Chalice 6 1/4
196. Choc. 2-Chrysan. Leaf 8 3/8 gold decorated chalice





- 237. Choc. Cactus spooner
- 238. Choc/clear Cloverleaf lamp 10"
- 239. Choc. Wild Rose with festoon lamp 10 3/4"
- 240. Choc/Clear Wild Rose with festoon lamp 10 1/4"
- 241. Choc. Wild Rose with festoon lamp 9 1/2"
- 242. Choc. Wild Rose with festoon lamp 8 7/8"
- 243. Choc. Wild rose with festoon lamp 8 1/4"
- 244. Choc. Wild rose with festoon lamp 7 7/8"
- 245. Choc. Shuttle sauce
- 246. Choc. Shuttle punch cup
- 247. Choc. Chrysanthemum Leaf cover butter, chip bottom
- 248. Choc. Chrysanthemum Leaf cover sugar
- 249. Choc. Chrysanthemum Leaf sm. Creamer
- 250. Choc. Chrysanthemum Leaf spooner
- 251. Choc. Chrysanthemum Leaf Salt & Pepper
- 252. Choc. Chrysanthemum Leaf sm. Compote, gold/red
- 253. Choc. Chrysanthemum Leaf sm. Compote
- 254. Choc. Chrysanthemum Leaf Cruet w/stopper
- 255. Choc. Chrysanthemum Leaf Celery
- 256. Choc. Chrysanthemum Leaf Cover Cracker
- 257. Choc. Cactus tankard and mug
- 258. Choc. Cactus butter dish on pedestal
- 259. Choc. Cactus 9 1/4" compote, flake
- 260. Choc. Cactus bowl and sauce
- 261. Choc. Cactus cake stand, chip
- 262. Choc. Cactus sm. Compote
- 263. Choc. Dog & Child mug
- 264. Nile Green Dog & Child mug
- 265. Choc. Deer & Oak Tree mug
- 266. Choc. No. 1 mug 4 1/4"
- 267. Choc. Cactus syrup
- 268. Choc. Chrysanthemum Leaf syrup
- 269. Choc. Geneva cruet w/stopper
- 270. Choc. W.R.B.K. cruet w/stopper
- 271. White Agate Holly toothpick (pic. on cover)
- 272. Holly Amber LG. toothpick
- 273. Holly Amber Sm. Toothpick
- 274. Holly Amber mustard pot
- 275. Holly Amber cruet
- 276. Holly Amber Salt & Pepper, one has sm. chip
- 277. Holly Amber Dewey sm. Tray

- 197. Choc. Chrysan. Leaf 8 3/8 ruby stained chalice
- 198. Choc. Dewey bowl, flakes
- 199. Choc. Dewey sauce, flakes
- 200. Choc. Leaf Bracket bowl
- 201. Choc. Leaf Bracket sauce
- 202. Choc. Shuttle nappy
- 203. Choc. Cactus nappy
- 204. Choc. Leaf Bracket creamer w/lid, chips
- 205. Nile Green mitted hand
- 206. Nile Green conn. Skillet
- 207. Choc. W.R.B.K. Cover butter, chips
- 208. Choc. W.R.B.K. Cover sugar
- 209. Choc. W.R.B.K. Cover creamer
- 210. Choc. W.R.B.K. Spooner
- 211. Choc. W.R.B.K. Lg. tray
- 212. Choc. Pitcher Frame Toothpick sm. chips
- 213. Choc. Leaf Bracket Toothpick
- 214. Choc. Geneva Toothpick
- 215. Choc. Chrysanthemum Leaf Toothpick
- 216. Choc. Wild Rose With Scrolling Toothpick
- 217. Nile Green Buffalo, repair
- 218. Golden Agate hen on nest, flake on bottom
- 219. Golden Agate Beaded dolphin
- 220. Choc. Fighting Cocks cover dish (pic. on cover)
- 221. Emerald Green Fighting Cocks cover dish (pic. on cover)
- 222. Teal Blue Fighting Cocks cover dish (pic. on cover)
- 223. Choc. Bird w/berry on nest
- 224. Choc. Hen on nest, flakes
- 225. Choc. Rabbit on nest, bottom repaired
- 226. Choc. Touching Squares cover butter
- 227. Choc. Touching Squares cover sugar
- 228. Choc. Touching Squares creamer
- 229. Choc. Water pitcher (unknown patt.)
- 230. Choc. Austrian sm. Creamer and spooner
- 231. Choc. Austrian cover nappy
- 232. Choc. Melrose comport 8 5/8" fluted
- 233. Red Agate Shuttle mug
- 234. Choc. Cactus cover butter
- 235. Choc. Cactus cover sugar
- 236. Choc. Cactus creamer





- 278. Holly Amber double lid compote
- 279. Holly Amber mug 4"
- 280. Holly Amber mug 4 1/2", flake
- 281. White Agate Rabbit on base, sm. chip on base
- 282. Choc. No. 312 Salt & Pepper
- 283. Choc. W.R.B.K. Salt & Pepper
- 284. Choc. No. 318 bowl
- 285. Holly Amber double lid compote
- 286. Holly Amber syrup
- 287. Holly Amber two handed relish, sm. flake
- 288. Holly Amber Parfait
- 289. Holly Amber Oval bowl on Pedestal
- 290. Holly Amber cover butter
- 291. Holly Amber cover sugar
- 292. Holly Amber Spooner
- 293. Holly Amber Creamer
- 294. Choc. Conn. Skillet, tiny chip
- 295. Choc. Hairbrush, heat stress on handle
- 296. Choc. Thistle, sm. flake
- 297. Holly Amber butter on pedestal
- 298. Holly Amber cover jelly compote, chip on lid,
- 299. Holly Amber sm. Cover compote
- 300. Holly Amber water pitcher, base polished
- 301. Holly Amber Six Tumblers
- 302. Holly Amber beaded Tumbler
- 303. Holly Amber Nappy
- 304. McKee Choc. Lamb on base
- 305. McKee Choc. Cow on base
- 306. McKee Choc. Hen with peeps on base
- 307. McKee Choc. Partridge Hen on base
- 308. McKee Choc. Duck on base
- 309. Holly Amber Lg. cover compote, lid chip
- 310. Holly Amber double lid compote
- 311. Holly Amber Square plate
- 312. Holly Amber bowl 7 1/4"
- 313. Holly Amber round plate 9 1/4"
- 314. Holly Amber round plate
- 315. Holly Amber Square plate on pedestal
- 316. Holly Amber Cake Stand
- 317. Rare Fenton Choc. No 410 vase, rim chips



- 318. Rare Fenton Choc. Butterfly & Berry bowl
- 319. Rare Fenton Choc. Grape & Cable w/Persian Medallion, chips
- 320. Choc. Geneva cover butter, bottom chip
- 321. Choc. Geneva cover sugar
- 322. Choc. Geneva Creamer
- 323. Choc. Geneva Spooner
- 324. Choc. Indoor master stein
- 325. Nile Green Indoor Tumbler
- 326. Choc. Lg. Serenade mug
- 327. Choc. Outdoor mug
- 328. Choc. Diamond Prisms Tumbler
- 329. Choc. Leaf Bracket Tumbler
- 330. Choc. Scalloped Flange Tumbler
- 331. Choc. Early Diamond Tumbler
- 332. Choc. Cactus Tumbler
- 333. Choc. Beehive Tumbler
- 334. Choc. Cord Drapery Tumbler
- 335. Choc. Shuttle Tumbler
- 336. Choc. No. 229 Tumbler
- 337. Choc. Split Rib No. 217 Tumbler
- 338. Choc. Sawtooth Tumbler
- 339. Choc. Strigal creamer, chips
- 340. Choc. Panel Salt & Pepper, chip
- 341. Choc. Leaf Bracket relish
- 342. Choc. Melrose compote
- 343. Choc. Melrose Sm. Cover compote, flakes
- 344. Choc. Melrose Sm. Sauce, age line
- 345. Choc. Pioneer's Victoria pickle jar
- 346. Choc. Ribbed cover dish
- 347. Choc. Cupid cover creamer, handle cracked
- 348. Choc. Chrysanthemum Leaf Nappy
- 349. Choc. Chrysanthemum Leaf bowl
- 350. Choc. Chrysanthemum Leaf bowl 8 1/4"
- 351. Choc. Chrysanthemum Leaf bowl 7 1/4"
- 352. 2-Choc. Chrysanthemum Leaf sauces
- 353. Choc. Ruffled Eye water pitcher
- 354. Choc. Feather water pitcher
- 355. Choc. Shuttle water pitcher

ITEMS SOLD FRIDAY, APRIL 7, 2006 AT 12:00 NOON

1. Clear Frosted Buffalo Paperweight-\$1000.00
2. Choc. Leaf Bracket water pitcher (inscr. PanAmerican 1901) (97-G)-\$350.00
3. Red Agate Tall Cat on hamper(101-M)-\$1050.00
4. Choc. Orange Tree powder box (128-C) bottom chip-\$150.00
5. Choc. Low Cat on hamper (101-N) some repair-\$550.00
6. Nile Green Dewey Parfait (110-A) no lid-\$300.00
7. Choc. Uneeda Milk Biscuit tumbler (97-D)-\$80.00
8. Choc. Puff Box (125-Q)-\$250.00
9. Choc. Pepper Box Mug (97-W)-\$175.00
10. Choc. Venetian Tray 8x10 (125-R) sm.-Chip-\$180.00
11. Red Agate Cactus salt & pepper (95-M)-\$320.00
12. Red Agate Cactus toothpick (95-J)-\$325.00
13. Choc. Cuff Box (125-I)-\$300.00
14. Choc. Cactus Mustard w/metal lid & spoon (95-L)-\$2400.00
15. Choc. Herringbone Buttress mug (97-H)-\$50.00
16. Choc. Russell Flower Pot, bottom polish, no tray-\$200.00
17. Nile Green Dust Pan (110-K) tiny chip-\$1000.00
18. Choc. Plain Ware Compote (97-L)-\$60.00
19. Choc. File Spooner (120 N)-\$725.00
20. Choc. White Oak cover butter, only one known (101-S)-\$4300.00
21. Choc. Rect. Cover box (125-O)-\$200.00
22. Choc. No. 102 salt & pepper w/stand (121-N)-\$1600.00
23. Choc. Scalloped Flange vase (97-A)-\$60.00
24. Choc. Cactus celery (95-E) chigger on foot-\$525.00
25. Nile Green Teardrop & Tassel water pitcher, repaired (110-E)-\$1025.00
26. Nile Green Teardrop & Tassel tumbler (110-P)-\$400.00
27. Red Agate Vintage bowl (128-J) chip-\$250.00
28. Choc. Melrose open compote (121-A)-\$125.00
29. Choc. Honeycomb master salt (121-R)-\$600.00
30. Choc. Honeycomb individual salt (121-Q)-\$450.00
31. Choc. Cut-glass pattern bowl (97-X) chip-\$400.00
32. Choc. 6 1/4 dia. Comport (94-B) chip-\$100.00
33. Choc. Serenade water pitcher w/pouring spout (126-D)-\$900.00
34. Choc. Serenade sm. Mug (126-E) heat stress on handle-\$50.00
35. Choc. Serenade sm. Mug (126-E)-\$50.00
36. Choc. Serenade sm. Mug (126-E)-\$50.00
37. Choc. Serenade sm. Mug (126-E)-\$50.00
38. Nile Green Dog head toothpick (110-H) sm. Flake-\$400.00
39. Choc. Childs Austrian cover Butter-\$2200.00
40. Choc. Childs Austrian cover Sugar-\$825.00
41. Choc. Childs Austrian Spooner-\$300.00
42. Choc. Childs Austrain Creamer-\$350.00
43. Choc. Cactus cover Cracker Jar (95-D)-\$175.00
44. Choc. Leaf Bracket salt & pepper-\$250.00
45. Choc. Fleur-de-lis celery (120-A)-\$175.00
46. Choc. Fleur-de-lis nappy (120-G)-\$90.00
47. Choc. Beaded Triangle nappy (120-P)-\$150.00
48. Choc. Melrose lg. cover compote(121-B) lid chip-\$250.00
49. Choc. Daisy cover butter-\$200.00
50. Choc. Large Dewey cover butter (96-O)-\$925.00
51. Choc. Large Dewey cover sugar (96-P) repaired-\$300.00
52. Choc. Large Dewey Creamer (96-S)-\$450.00
53. Choc. Large Dewey Spooner (96-R) flake on foot-\$300.00
54. Choc. Smooth rim Dolphin-\$325.00
55. Choc. Fashion (Venetian) glove box (126-U) hairline in bottom-\$300.00
56. Nile Green Dewey cruet w/stopper (110-O) (After Fire Stopper)-\$650.00
57. Choc. W.R.B.K. master berry bowl (124-U)-\$110.00
58. Choc. W.R.B.K. (6) sauces (124-T)-\$270.00
59. Choc. #75 Ice Tea (126-S)-\$450.00
60. Choc. W.R.B.K. smoking set-3 pieces (124-R)-\$950.00
61. Choc. Shuttle salt & pepper-\$2000.00
62. Choc. Five-Fluted bowl (126-J)-\$150.00
63. Choc. Five-Fluted sauce (126-I)-\$130.00
64. Choc. W.R.B.K. 10 1/8" vase (124-N)-\$275.00
65. Choc. Fleur-de-lis cover butter (120-F)-\$1000.00
66. Choc. Fleur-de-lis cover sugar (120-H)-\$200.00
67. Choc. Fleur-de-lis Creamer (120-L)-\$250.00
68. Choc. Fleur-de-lis Spooner (120-K)-\$350.00
69. Choc. Cord Drapery Syrup (97-J) bubble burst-\$350.00
70. Choc. Fleur-de-lis water pitcher (120-C)-\$1050.00
71. Choc. Fleur-de-lis tumber (120-B)-\$170.00
72. Choc. Masonic vase (126-R)-\$450.00
73. Choc. Dewey parfait w/lid (96-L)-\$125.00
74. Choc. Daisy cover sugar-\$125.00
75. Choc. Daisy Creamer-\$200.00
76. Choc. Daily Spooner-\$75.00
77. Choc. Aldine oval cover bowl (126-H)-\$1600.00
78. Red Agate Leaf Bracket cover butter-\$325.00
79. Choc. Geneva syrup (127-L)-\$800.00
80. Choc. Honeycomb Rect. Dish 4" W- 6 3/4 L (121-M)-\$250.00
81. Choc. Geneva salt & pepper (127-J)-\$600.00
82. Choc. Big Rib salt(121-O)-\$575.00
83. Choc. Leaf Bracket cruet-\$225.00
84. Choc. Shuttle cover butter-\$1400.00
85. Choc. Six Fluted bowl (126-F)-\$80.00
86. Choc. Six Fluted sauce (126-G)-\$170.00
87. Choc. Teardrop & Tassel lg. sauce (95-Q)-\$250.00
88. Choc. Teardrop & Tassel sm. Sauce (95-S)-\$200.00
89. Choc. Cut-glass type bowl (125-N)-\$425.00
90. Rose Agate Holly spooner(117-E)-\$2500.00
91. Choc. Heron water pitcher (96-C)-\$850.00
92. Choc. Squirrel water pitcher (96-A)-\$775.00
93. Choc. Racing Deer and Doe water pitcher (96-B)-\$500.00
94. Choc. Teardrop & Tassel cover butter (95-T)-\$1600.00
95. Choc. Teardrop & Tassel cover sugar (95-R)-\$1100.00
96. Choc. Teardrop & Tassel Creamer (95-P)-\$600.00
97. Choc. Collar box 3 1/2 H (125-J)-\$350.00
98. Choc. Geneva jelly compote (127-N)-\$180.00
99. Choc. Geneva Oval bowl 10" long (127-D)-\$225.00
100. Choc. Dewey Cruet (96-X)-\$950.00
101. Choc. Dewey salt & pepper (96-W) Flake on feet-\$2400.00
102. Choc. Dewey sm. Serpentine tray (96-Y)-\$2200.00
103. Choc. Indoor drink scene mug 5 5/8 (96-I) Flake on rim-\$200
104. Choc. Venetian jewel box (125-P) chigger on bottom-\$375
105. Choc. Venetian Tray 3 7/8"x5" (125-T)-\$200.00
106. Choc. Venetian Tray 4 3/8"x8 3/8" (125-S)-\$150.00
107. Choc. Leaf Bracket relish 11"-\$175.00
108. Choc. W.R.B.K. water pitcher (124-P)-\$500.00
109. Choc. W.R.B.K. tumbler (124-P)-\$60.00
110. Choc. Orange Tree hatpin holder (128-B)-\$450.00
111. Choc. Cattail & Wtrilly water pitcher (128-E) strsr mrk-\$2600
112. Choc. Cattail and waterlilly tumbler (128-D)-\$325.00
113. Canary smooth sided wheelbarrow-\$200.00
114. Amber smooth sided wheelbarrow-\$210.00
115. Choc. Aurora rectangular box 5 1/2"x9" (121-K) chips-\$350.00
116. Choc. Masonic nappy (126-T)-\$75.00
117. Choc. Navarre nappy (126-K) chips-\$70.00
118. Choc. Aurora Pickle dish (121-I) repaired-\$60.00
119. Choc. Dewey sm. Butter (96-U) chip on bottom-\$90.00
120. Choc. Dewey sm. Cover sugar (96-V) chip on bottom-\$75.00
121. Choc. Dewey sm. Creamer (97-T)-\$70.00
122. Choc. File bowl (120-J)-\$575.00
123. Choc. File sauce (120-I)-\$190.00
124. Choc. Cattail & wtrilly cover butter (128-I) Flkes on bot-\$1250
125. Choc. Cattail and waterlilly cover sugar (128-G)-\$500.00
126. Choc. Cattail and waterlilly creamer (128-H)-\$300.00
127. Choc. Cattail and waterlilly spooner (128-F) flakes-\$250.00
128. Choc. Cattail and waterlilly sauce (128-K)-\$65.00
129. Choc. Shield w/Daisy Button cruet (121-E) chip-\$2000.00
130. Choc. Shield w/Daisy Button lg. bowl (121-F) chip-\$750.00
131. Choc. Shield w/Daisy Button sauce (121-J)-\$400.00
132. Nile Green Beaded Dolphin (110-G)-\$2500.00
133. Choc. Geneva oval bowl 9 3/8" (127-Q)-\$90.00
134. Choc. Geneva oval bowl 8 1/4" (127-O) tiny chip-\$80.00
135. Choc. Geneva oval sauce (127-P)-\$100.00
136. Choc. Phenix 5 bowl-\$2000.00
137. Clear Phenix 5 tumbler-No Sale
138. Choc. Cactus plate (94-M)-\$70.00
139. Choc. (2) Cactus ice creams (94-L,N)-\$200.00
140. Choc. Cactus water pitcher (95-B)-\$425.00
141. Nile Green indoor mug w/spout (110-B)-\$270.00
142. Choc. Swirl pattern mug (125-K)-\$650.00
143. Choc. Melrose fluted compote 6 7/8" (121-C)-\$90.00
144. Red Agate Leaf Bracket nappy-\$90.00
145. Choc. Cactus sweetmeat (Red Agate) (95-C)-\$2200.00
146. Choc. Cactus 8 1/4" compote(Red Agate)(94-A) flakes-\$225
147. Golden & Choc. Cactus cruet (95-F)-\$325.00
148. Choc. Outdoor mug w/spout (96-N)-\$100.00
149. Clear Cord Drapery master salt-\$150.00
150. Nile Green hen on nest (110-F) sm. Repair on base-\$1500
151. 2 Nile Green elves mugs-\$50.00
152. Nile Green witch head toothpick (repro)-\$15.00

PLEASE SEE PAGE 2 FOR SATURDAY SALE RESULTS

ITEMS SOLD SATURDAY, APRIL 8, 2006 AT 10:00

153. Choc. Cuff set sm. flake-\$1900.00
154. Choc. File water pitcher, hairline in spout (120-E)-\$1100.00
155. Choc. File tumbler (120-D)-\$900.00
156. Choc. Beaded triangle Salt & pepper (120-O)-\$1000.00
157. Choc. Majestic compote (125-D)-\$375.00
158. Choc. Chrysanthemum Leaf Carafe (118-C)-\$2400.00
159. Choc. Wild Rose with Scrolling child's cover butter (110-X)-\$375.00
160. Choc. Wild Rose with Scrolling child's cover sugar (110-U)-\$350.00
161. Choc. Wild Rose with Scrolling child's creamer (110-W)-\$100.00
162. Choc. Wild Rose with Scrolling child's spooner (110-V)-\$110.00
163. Choc. Paneled water pitcher, stress on handle (96-H)-\$300.00
164. Choc. Paneled tumbler, sm. Chip (96-G)-\$350.00
165. Choc. Indoor Drinking Lg. pitcher w/pouring spout (96-E)-\$375.00
166. Choc. 6-Indoor Drinking Tumblers (96-Q)-\$660.00
167. Choc. Geneva water pitcher (127-C)-\$600.00
168. Choc. Geneva tumbler (127-B)-\$70.00
169. Choc. Jubilee celery tray (126-Q)-\$130.00
170. Choc. Beaded Triangle 6" vase (120-Q)-\$175.00
171. Choc. Indian Head creamer (97-M)-\$5250.00
172. Choc. Geneva Bowl 8 1/2 (127-A)-\$175.00
173. Choc. Geneva sauce (127-F)-\$55.00
174. Choc. Chrysanthemum Leaf water pitcher (118-F)-\$4200.00
175. Choc. Chrysanthemum Leaf tumbler (118-E)-\$325.00
176. Red Agate Smooth top dolphin (101-E)-\$1000.00
177. Red Agate Beaded top dolphin (101-D)-\$550.00
178. Red Agate Sawtooth top dolphin (101-C)-\$425.00
179. Choc. Rose Garland water pitcher (126-M)-\$5000.00
180. Choc. Rose Garland cover sugar, lid rim chips (126-P)-\$1000.00
181. Choc. Rose Garland creamer, stress line on handle (126-O)-\$2100.00
182. Choc. Griffin Candle holder (125-A)-\$4200.00
183. Choc. Rose Garland footed bowl (126-N)-\$1800.00
184. Choc. Rose Garland footed sauce (126-L)-\$675.00
185. Choc. Waffle sauce, repaired (125-M)-\$120.00
186. Choc. 2-Indoor mugs 4 7/8" (96-J)-\$190.00
187. Choc. Scalloped Flange vase (97-A)-\$65.00
188. Choc. Cactus 6" vase (95-H)-\$1400.00
189. Choc. Wheelbarrow (110-S)-\$1200.00
190. Translucent Nile Green Wheelbarrow-\$2600.00
191. Teal Blue Wheelbarrow (110-T)-\$525.00
192. Amber Wheelbarrow (110-Q)-\$1250.00
193. Nile Green Wheelbarrow (110-M)-\$950.00
194. Clear Wheelbarrow (110-R)-\$325.00
195. Choc. Chrysanthemum Leaf Chalice 6 1/4 (118-L)-\$400.00
196. Choc. 2-Chrysan. Leaf 8 3/8 gold decorated chalice (118-D)-\$900.00
197. Choc. Chrysan. Leaf 8 3/8 ruby stained chalice (118-B)-\$550.00
198. Choc. Dewey bowl, flakes-\$100.00
199. Choc. Dewey sauce, flakes-\$20.00
200. Choc. Leaf Bracket bowl-\$100.00
201. Choc. Leaf Bracket sauce-\$35.00
202. Choc. Shuttle nappy-\$110.00
203. Choc. Cactus nappy (95-K)-\$150.00
204. Choc. Leaf Bracket creamer w/lid, chips (97-E)-\$220.00
205. Nile Green mitted hand (110-D)-\$1450.00
206. Nile Green conn. Skillet (110-C)-\$1450.00
207. Choc. W.R.B.K. Cover butter, chips (124-G)-\$450.00
208. Choc. W.R.B.K. Cover sugar (124-J)-\$200.00
209. Choc. W.R.B.K. Cover creamer (124-K)-\$170.00
210. Choc. W.R.B.K. Spooner (124-H)-\$150.00
211. Choc. W.R.B.K. Lg. tray (124-S)-\$175.00
212. Choc. Pitcher Frame Toothpick sm. chips-\$1400.00
213. Choc. Leaf Bracket Toothpick-\$375.00
214. Choc. Geneva Toothpick (127-M)-\$400.00
215. Choc. Chrysanthemum Leaf Toothpick (118-N)-\$850.00
216. Choc. Wild Rose With Scrolling Toothpick-\$320.00
217. Nile Green Buffalo, repair (110-J)-\$525.00
218. Golden Agate hen on nest, flake on bottom (101-A)-\$2300.00
219. Golden Agate Beaded dolphin (101-B)-\$1350.00
220. Choc. Fighting Cocks cover dish (101-J)-\$3000.00
221. Emerald Green Fighting Cocks cover dish-\$3700.00
222. Teal Blue Fighting Cocks cover dish-\$3500.00
223. Choc. Bird w/berry on nest (101-I)-\$2900.00
224. Choc. Hen on nest, flakes (101-L)-\$475.00
225. Choc. Rabbit on nest, bottom repaired (101-H)-\$350.00
226. Choc. Touching Squares cover butter (125-H)-\$1500.00
227. Choc. Touching Squares cover sugar (94-G)-\$1000.00
228. Choc. Touching Squares creamer (94-H)-\$1200.00
229. Choc. Water pitcher (unknown patt.) (125-C)-\$1025.00
230. Choc. Austrian sm. Creamer and spooner-\$180.00
231. Choc. Austrian cover nappy-\$250.00
232. Choc. Melrose comport 8 5/8" fluted (121-D)-\$275.00
233. Red Agate Shuttle mug-\$180.00
234. Choc. Cactus cover butter (94-F)-\$175.00
235. Choc. Cactus cover sugar (94-G)-\$310.00
236. Choc. Cactus creamer (94-H)-\$250.00
237. Choc. Cactus spooner (94-E)-\$150.00
238. Choc/clear Cloverleaf lamp 10" (102-J)-\$800.00
239. Choc. Wild Rose with festoon lamp 10 3/4" (124-F)-\$750.00
240. Choc/Clear Wild Rose with festoon lamp 10 1/4" (124-A)-\$700.00
241. Choc. Wild Rose with festoon lamp 9 1/2" (124-B)-\$850.00
242. Choc. Wild Rose with festoon lamp 8 7/8" (124-D)-\$775.00
243. Choc. Wild rose with festoon lamp 8 1/4" (124-C)-\$1300.00
244. Choc. Wild rose with festoon lamp 7 7/8" (124-E)-\$1075.00
245. Choc. Shuttle sauce-\$85.00
246. Choc. Shuttle punch cup-\$100.00
247. Choc. Chrysanthemum Leaf cover butter, chip bottom, (118-K)-\$700.00
248. Choc. Chrysanthemum Leaf cover sugar (118-I)-\$850.00
249. Choc. Chrysanthemum Leaf creamer (118-J)-\$400.00
250. Choc. Chrysanthemum Leaf spooner (118-H)-\$450.00
251. Choc. Chrysanthemum Leaf Salt & Pepper (118-O)-\$1150.00
252. Choc. Chrysanthemum Leaf sm. Compote, gold/red (118-M)-\$325.00
253. Choc. Chrysanthemum Leaf sm. Compote-\$275.00
254. Choc. Chrysanthemum Leaf Cruet w/stopper (118-S)-\$825.00
255. Choc. Chrysanthemum Leaf Celery (118-G)-\$1500.00
256. Choc. Chrysanthemum Leaf Cover Cracker (118-A)-\$3700.00
257. Choc. Cactus tankard and mug (95-I & N)-\$70.00
258. Choc. Cactus butter dish on pedestal (94-D)-\$500.00
259. Choc. Cactus 9 1/4" compote, flake (94-C)-\$275.00
260. Choc. Cactus bowl and sauce (94-K)-\$180.00
261. Choc. Cactus cake stand, chip (95-G)-\$800.00
262. Choc. Cactus sm. Compote (94-I)-\$110.00
263. Choc. Dog & Child mug (97-Z)-\$2700.00
264. Nile Green Dog & Child mug (110-L)-\$2100.00
265. Choc. Deer & Oak Tree mug (97-Y)-\$3500.00
266. Choc. No. 1 mug 4 1/4" (97-U)-190.00
267. Choc. Cactus syrup (95-O)-\$330.00
268. Choc. Chrysanthemum Leaf syrup (118-R)-\$1500.00
269. Choc. Geneva cruet w/stopper (127-K)-\$1000.00
270. Choc. W.R.B.K. cruet w/stopper (124-O)-\$300.00
271. White Agate Holly toothpick-\$4900.00
272. Holly Amber Lg. toothpick (114-L)-\$3400.00
273. Holly Amber Sm. Toothpick-\$400.00
274. Holly Amber mustard pot (114-N)-\$1600.00
275. Holly Amber cruet (114-P)-\$2100.00
276. Holly Amber Salt & Pepper, one has sm. chip (114-O)-\$2600.00
277. Holly Amber Dewey sm. Tray (114-Q)-\$3900.00
278. Holly Amber double lid compote (115-A)-\$5000.00
279. Holly Amber mug 4" (114-I)-\$950.00
280. Holly Amber mug 4 1/2", flake (114-M)-\$425.00
281. White Agate Rabbit on base, sm. chip on base-\$1600.00
282. Choc. No. 312 Salt & Pepper (121-P)-\$1100.00
283. Choc. W.R.B.K. Salt & Pepper (124-I)-\$900.00
284. Choc. No. 318 bowl (120-M)-\$350.00
285. Holly Amber double lid compote (115-B)-\$5250.00
286. Holly Amber syrup (114-K)-\$3500.00
287. Holly Amber two handed relish, sm. flake (115-L)-\$250.00
288. Holly Amber Parfait (114-J)-\$650.00
289. Holly Amber Oval bowl on Pedestal (115-M)-\$2300.00
290. Holly Amber cover butter (115-E)-\$1400.00
291. Holly Amber cover sugar (115-F)-\$2800.00
292. Holly Amber Spooner (115-G)-\$900.00
293. Holly Amber Creamer (115-H)-\$1050.00
294. Choc. Conn. Skillet, tiny chip (101-Q)-\$1700.00
295. Choc. Hairbrush, heat stress on handle (101-R)-\$1700.00
296. Choc. Thistle, sm. flake-\$2000.00
297. Holly Amber butter on pedestal (114-E)-\$8250.00
298. Holly Amber cover jelly compote, chip on lid, (114-D)-\$1100.00
299. Holly Amber sm. Cover compote (114-A)-\$3600.00
300. Holly Amber water pitcher, base polished (114-C)-\$2500.00
301. Holly Amber Six Tumblers (114-B)-\$2900.00
302. Holly Amber beaded Tumbler (115-N)-\$3900.00
303. Holly Amber Nappy (114-R)-\$700.00
304. McKee Choc. Lamb on base (101-K)-\$2400.00
305. McKee Choc. Cow on base (101-P)-\$3800.00
306. McKee Choc. Hen with peeps on base (101-O)-\$1900.00
307. McKee Choc. Partridge Hen on base (101-G)-\$1600.00
308. McKee Choc. Duck on base (101-F)-\$2500.00
309. Holly Amber Lg. cover compote, lid chip (115-D)-\$4200.00
310. Holly Amber double lid compote (115-C)-\$6200.00
311. Holly Amber Square plate (115-I)-\$900.00
312. Holly Amber bowl 7 1/4" (114-H)-\$400.00
313. Holly Amber round plate 9 1/4" (115-J)-\$1400.00
314. Holly Amber round plate (115-K)-\$500.00
315. Holly Amber Square plate on pedestal (114-F)-\$6200.00
316. Holly Amber Cake Stand (114-G)-\$5250.00
317. Rare Fenton Choc. No 410 vase, rim chips (128-A)-\$325.00
318. Rare Fenton Choc. Butterfly & Berry bowl (128-L)-\$1300.00
319. Rare Fenton Choc. Grape & Cable w/Pers Med, chips (128-M)-\$450
320. Choc. Geneva cover butter, bottom chip (127-I)-\$250.00
321. Choc. Geneva cover sugar (127-G)-\$200.00
322. Choc. Geneva Creamer (127-H)-\$100.00
323. Choc. Geneva Spooner (127-E)-\$150.00
324. Choc. Indoor master stein (96-K)-\$475.00
325. Nile Green Indoor Tumbler (110-N)-\$400.00
326. Choc. Lg. Serenade mug (126-C)-\$170.00
327. Choc. Outdoor mug-\$65.00
328. Choc. Diamond Prisms Tumbler (97-R)-\$700.00
329. Choc. Leaf Bracket Tumbler (97-F)-\$40.00
330. Choc. Scalloped Flange Tumbler (97-T)-\$120.00
331. Choc. Early Diamond Tumbler (97-P)-\$200.00
332. Choc. Cactus Tumbler (95-A)-\$25.00
333. Choc. Beehive Tumbler (97-N)-\$1300.00
334. Choc. Cord Drapery Tumbler (97-I)-\$300.00
335. Choc. Shuttle Tumbler (97-B)-\$110.00
336. Choc. No. 229 Tumbler (97-S)-\$290.00
337. Choc. Split Rib No. 217 Tumbler (97-Q)-\$800.00
338. Choc. Sawtooth Tumbler (97-O)-\$120.00
339. Choc. Strigal creamer, chips (125-B)-\$50.00
340. Choc. Panel Salt & Pepper, chip (97-AA)-\$320.00
341. Choc. Leaf Bracket relish-\$60.00
342. Choc. Melrose compote (121-H)-\$110.00
343. Choc. Melrose Sm. Cover compote, flakes (121-G)-\$150.00
344. Choc. Melrose Sm. Sauce, age line (121-L)-\$350.00
345. Choc. Pioneer's Victoria pickle jar (97-K)-\$375.00
346. Choc. Ribbed cover dish (96-M)-\$425.00
347. Choc. Cupid cover creamer, handle cracked (97-V)-\$225.00
348. Choc. Chrysanthemum Leaf Nappy (118-P)-\$500.00
349. Choc. Chrysanthemum Leaf bowl (118-Q)-\$300.00
350. Choc. Chrysanthemum Leaf bowl 8 1/4" (118-U)-\$225.00
351. Choc. Chrysanthemum Leaf bowl 7 1/4" (118-W)-\$350.00
352. 2-Choc. Chrysanthemum Leaf sauces (118-T & V)-\$180.00
353. Choc. Ruffled Eye water pitcher (96-D)-\$650.00
354. Choc. Feather water pitcher (125-E)-\$2200.00
355. Choc. Shuttle water pitcher (97-C)-\$4000.00