

Online Auction Catalog

1 1. Emerald Green Herringbone Buttress Punch Cup



2 2. Chocolate Uneda Biscuit Tumbler

tool marks on rim



3 3. Crystal Cord Drapery 6 1/4" (small) Footed Butter Dish



4 4. Emerald Green Dewey Spooner 5" Tall (Large)

Strange area. Possible crack? It cannot be felt and it seems to be internal, but it is noticeable.



5 5. Chocolate/Red Agate Beaded Dolphin (No Lid)



6

6. Chocolate Geneva Tumbler

Small amount of agate to rim



7

7. Crystal Holly Creamer (similar to mug)



8

8. Chocolate Greentown Daisy Sugar

minor flaking to various areas and minor roughness to lid



9

9. Crystal Austrian Creamer with lid (From the Herrick Collection)

This is an item that was purchased at auction from Newfields Indianapolis Museum of Art and was a part of the original Herrick Collection donated to the museum. Documentation will be included with item.



10

10. Chocolate Cord Drapery Syrup



11 **11. Golden Agate Holly Sugar**



12 **12. Crystal Barware Goblet**



13 **13. GT Novelty - Amber Dewey Bust on Base**

Minor stress crack on bottom of lid. Can be felt with fingernail on one side, but not the other



14 **14. Crystal Pleat Band Cake Stand**



15 **15. Amber Dewey Parfait w/lid**

Possible flake to scallop on foot or possibly the mold was not full
Slight nick to lid



16 **16. Emerald Green Herringbone Buttress Spooner**



17 **17. Crystal Holly 3 1/2" Sauce (pair)**

bubble issue with one from manufacturing



18 **18. GT Animal - Teal Blue Hen on Nest**

base chip and rim roughness



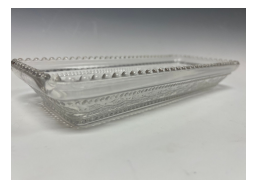
19 **19. Chocolate Beaded Triangle Nappy w handles**

several rim chips



20 **20. Crystal Holly Rectangular Bowl 10" x 4"**

nick to one corner



21 **21. Golden Agate Holly Jelly Compote (no lid)**



22 **22. Chocolate Cactus 5 1/4" Compote**



23 **23. Cobalt Blue Cord Drapery 8" Footed, Fluted Bowl**

3 feet chips



24 **24. Chocolate Greentown Tumbler - Sawtooth Tumbler**



25 **25. Lettuce Green Opal (aka Nile Green) Teardrop & Tassel Tumbler**



26 **26. Emerald Green Herringbone Buttress Goblet**



27 **27. Chocolate Geneva Salt & Pepper (pair)**

Both have issues. 1 has rim chip and the other has a bubble burst



28 **28. Greentown Animals - Amber Rabbit**



29 **29. Chocolate Wild Rose with Bowknot Cruet**

roughness to rim
some pebbling in glass - from manufacturing



30 **30. Chocolate Austrian Cream - from the Herrick Collection**

This is an item that was purchased at auction from Newfields Indianapolis Museum of Art and was a part of the original Herrick Collection donated to the museum. Documentation will be included with item.



31 **31. Amber Cord Drapery 8 1/4" Footed Bowl, Fluted**

feet flakes



32 **32. Canary Austrian Wine**



33 **33. Cobalt Blue Cord Drapery 4 1/2" Compote - Jelly (No Lid)**



34 **34. Emerald Green Ruffled Eye Pitcher - From the Herrick Collection**

Rim Issues

This is an item that was purchased at auction from Newfield's Indianapolis Museum of Art and was a part of the original Herrick Collection donated to the museum. Documentation will be included with item.



35 **35. Emerald Green Teardrop & Tassel 2-Handled Pickle Dish**



36 **36. Crystal Brazen Shield Tumbler**



37 **37. Chocolate Cactus Nappy**

minor nick to rim and handle



38 **38. Cobalt Blue Brazen Shield 7 1/2" Bowl**

rim flaws, probably as manufactured - see photos



39 **39. Cobalt Blue Brazen Shield Sauce**



40 **40. Crystal Holly Round Plate**



41 **41. Golden Agate Holly Spooner**



42 **42. Emerald Green Herringbone Buttress 6 1/4" Bowl**



43 **43. Emerald Green Dewey Mug**

minor flake



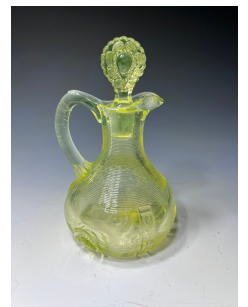
44 **44. Chocolate Fleur De Lis Creamer**

minor rim roughness



45 **45. Canary Dewey Cruet**

minor nick to stopper



46

46. Crystal Pattern #75 Ice Tea Tumbler - From the Herrick Collection

This is an item that was purchased at auction from Newfield,s Indianapolis Museum of Art and was a part of the original Herrick Collection donated to the museum. Documentation will be included with item.



47

47. Chocolate Wild Rose with Festoon Lamp

possible crack on underneath side



48

48. GT Animal - Golden Agate Beaded Dolphin

very small nick to lid



49

49. Emerald Green Herringbone Buttress 4" Footed Sauce



50

50. GT Animal - Opaque White Fighting Cocks

small ash bubble burst as manufactured



51 **51. GT Tumbler - Crystal Horseshoe Tumbler - From the Herrick Collection**

This is an item that was purchased at auction from Newfields Indianapolis Museum of Art and was a part of the original Herrick Collection donated to the museum. Documentation will be included with item.



52 **52. Crystal Pattern #11 Pitcher**



53 **53. Bar Goods Lot 3 Pieces**



54 **54. Chocolate Indoor Drinking Scene Mug - From the Herrick Collection**

This is an item that was purchased at auction from Newfields Indianapolis Museum of Art and was a part of the original Herrick Collection donated to the museum. Documentation will be included with item.



55 **55. Chocolate Honeycomb Salt Dip**



56 **56. Emerald Green Herringbone Buttress Syrup**



57 **57. Emerald Green Herringbone Buttress 5 1/4" Bowl**



58 **58. Golden Agate Holly Plate, Square**



59 **59. Emerald Green Teardrop & Tassel Creamer**

very tiny bead nick and spout roughness



60 **60. Emerald Green Herringbone Buttress Wine**

Etched "1899" and "HA"



61

61. Amber Austrian Child's Creamer



62

62. Crystal Beaded Panel Sauce - From the Herrick Collection

This is an item that was purchased at auction from Newfields Indianapolis Museum of Art and was a part of the original Herrick Collection donated to the museum. Documentation will be included with item.



63

63. Amber Cord Drapery Cruet



64

64. GT Animal - Teal Rabbit

base chip and rim roughness



65

65. Chocolate Leaf Bracket Tumbler - From the Herrick Collection

This is an item that was purchased at auction from Newfields Indianapolis Museum of Art and was a part of the original Herrick Collection donated to the museum. Documentation will be included with item.



66. Opaque White Serenade Plate - From the Herrick Collection

This is an item that was purchased at auction from Newfields Indianapolis Museum of Art and was a part of the original Herrick Collection donated to the museum. Documentation will be included with item.



67. GT Novelty - Opaque White Dewey Bust on Base

cracked base



68. GT Animal - Emerald Green Rabbit

a few flakes to base



69. Crystal Shuttle Tankard Creamer - From the Herrick Collection

This is an item that was purchased at auction from Newfields Indianapolis Museum of Art and was a part of the original Herrick Collection donated to the museum. Documentation will be included with item.



70. Crystal Herringbone Buttress Punch Cup (#2)



71. Chocolate Shuttle Punch Cup



72

72. Emerald Green Austrian Punch Cup



73

\$5

73. Amber Cord Drapery 8 1/2" Open Compote



74

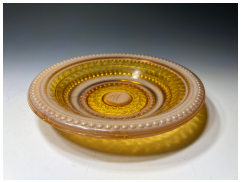
74. Chocolate Dewey 2 1/4" Sugar

like issues - cracks/lines common to chocolate



75

75. Golden Agate Holly Plate, Round



76

76. Crystal Invincible Sugar (No Lid) - From the Herrick Collection

This is an item that was purchased at auction from Newfields Indianapolis Museum of Art and was a part of the original Herrick Collection donated to the museum. Documentation will be included with item.



77

77. Chocolate Cactus Salt & Pepper

minor flakes to both



78

78. Chocolate Leaf Bracket Celery



79

79. GT Novelty - Canary Dustpan

flakes to rim - very common in these pieces



80

80. Chocolate Carlsbad (Chrysanthemum Leaf) Chalice (Vase) 6"



81

81. Chocolate Leaf Bracket Table Set - 4 Pieces

Very Pretty set - tried to match pieces with some Red Agate
Sugar - crack, rim chip, and rough lid
Spoon - ok
Creamer - spout flake
Butter - ok



82

82. Golden Agate Holly Pickle Dish - 2 handled

small chip to handle



83

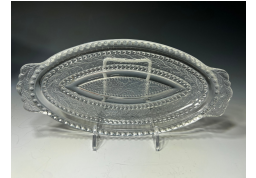
83. GT Animal - Red Agate Dolphin, Beaded



84

84. Crystal Holly Pickle Dish

small nick to handle



85

85. Chocolate Cactus Mustard



86

86. Cobalt Blue Teardrop & Tassel 7 3/8" Bowl

bubble interior rim of glass



87

87. Crystal Teardrop & Tassel Butter

very minor roughness to rim and lid



88

88. Crystal Austrian Tumbler - From the Herrick Collection

This is an item that was purchased at auction from Newfields Indianapolis Museum of Art and was a part of the original Herrick Collection donated to the museum. Documentation will be included with item.



89

89. GT Animal - Chocolate Rabbit

flake to inside rim, heat cracks



90

90. Golden Agate Holly Creamer



91

91. Canary Inverted Thumbprint Wine



92

92. Chocolate Cactus Vase

rim flake



93

93. Cobalt Blue Brazen Shield Tumbler



94

94. Crystal Teardrop & Tassel Goblet



95

95. Chocolate Uneda Biscuit Tumbler - From the Herrick Collection

This is an item that was purchased at auction from Newfields Indianapolis Museum of Art and was a part of the original Herrick Collection donated to the museum. Documentation will be included with item.



96.

96. Chocolate Master Indoor Drinking Scene Mug

Check out photos of the rim, probably from production



97

97. Crystal Teardrop & Tassel Pitcher - From the Herrick Collection

rim flakes

This is an item that was purchased at auction from Newfields Indianapolis Museum of Art and was a part of the original Herrick Collection donated to the museum. Documentation will be included with item.



98

98. Emerald Green Herringbone Buttress Tumbler, Extended Rib



99 **99. Emerald Green Dewey Salt**

feet issues - see photos



100 **100. Amber Cord Drapery Flattened Pickle Dish**



101 **101. Emerald Green Herringbone Buttress Creamer**



102 **102. Teal Blue Dewey Bust with Base**



103 **103. Chocolate Sawtooth Tumbler**



104 **104. Emerald Green Herringbone Buttress Cracker (No Lid)**

no lid



105 **105. Chocolate Geneva Oval Bowl - 8 1/4" x 5 1/4"**



106 **106. Emerald Green Herringbone Buttress 3" Cordial**



107 **107. Chocolate Cactus Tumbler - From the Herrick Collection**

base chip

This is an item that was purchased at auction from Newfields Indianapolis Museum of Art and was a part of the original Herrick Collection donated to the museum. Documentation will be included with item.



108 **108. Chocolate Leaf Bracket Toothpick**



109 **109. Opaque White Dewey Sugar - 2 5/8" Lid (no lid) - From the Herrick Collection**

Minor feet flakes

This is an item that was purchased at auction from Newfields Indianapolis Museum of Art and was a part of the original Herrick Collection donated to the museum. Documentation will be included with item.



110 **110. Emerald Green Herringbone Buttress Butter**

chip to base



111 **111. Emerald Green Herringbone Buttress 5 3/4" Vase**



112 **112. Chocolate Cactus Lot**

Various conditions - see photos



113 **113. Chocolate Squirrel Pitcher - From the Herrick Collection**

Repaired base

This is an item that was purchased at auction from Newfields Indianapolis Museum of Art and was a part of the original Herrick Collection donated to the museum. Documentation will be included with item.



114 **114. Emerald Green Herringbone Buttress 5 1/4" Bowl (#2)**



115

115. Emerald Green Herringbone Buttress Goblet (#2)



116

116. Emerald Green Herringbone Buttress Punch Cup (#2)



117

117. Crystal Touching Squares Creamer



118

118. Chocolate Wild Rose with Scrolling Child's Creamer

